

A+

WOOD STOVE

VEGAS

AVAILABLE DESIGN:
(1) Soapstone Ceramic, corpus steel black



(1)



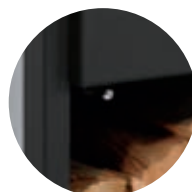
Texas, Soapstone Ceramic, corpus steel black

STANDARD SCOPE OF DELIVERY

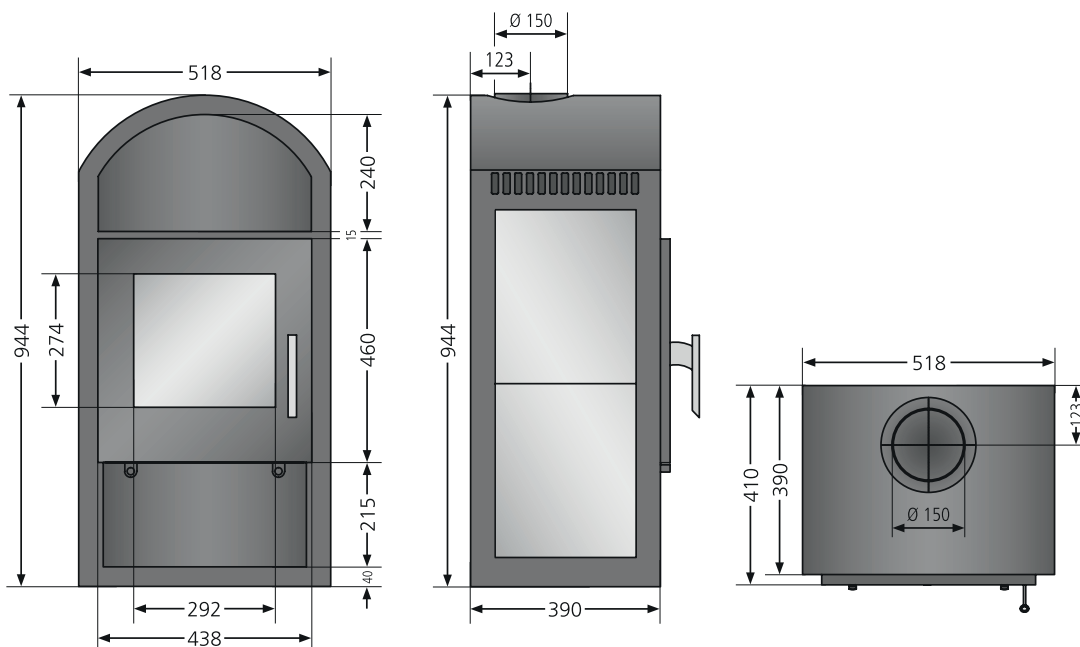
- Air flow handle



Air flow handle



Separately controlled primary- and secondary air supply



| Available design | Order no. | EAN-Code |
|--|----------------|---------------|
| Vegas, Soapstone Ceramic, corpus steel black | 8357 22 | 4250340909235 |
| Energy efficiency class | | A+ |
| Connection possibility | | top |
| Nominal heat output | kW | 6,0 |
| Weight (incl. packaging) | ca. kg | 112 |
| Room heating capability | m ³ | 124 |
| Length of logs | cm | 30 |
| Exhaust gas mass flow | g/s | 7,3 |
| Exhaust gas temperature | °C | 231 |
| Required discharge pressure | mbar | 0,12 |

Illustrations are given as indications only. Optical deviations are no defect.

JUSTUS